



**WORKFORCE**  
DATA QUALITY  
**CAMPAIGN**

# State Longitudinal Data Systems: Progress, Possibility, and Perils

December 1, 2016

Rachel Zinn

WDQC Director  
National Skills Coalition

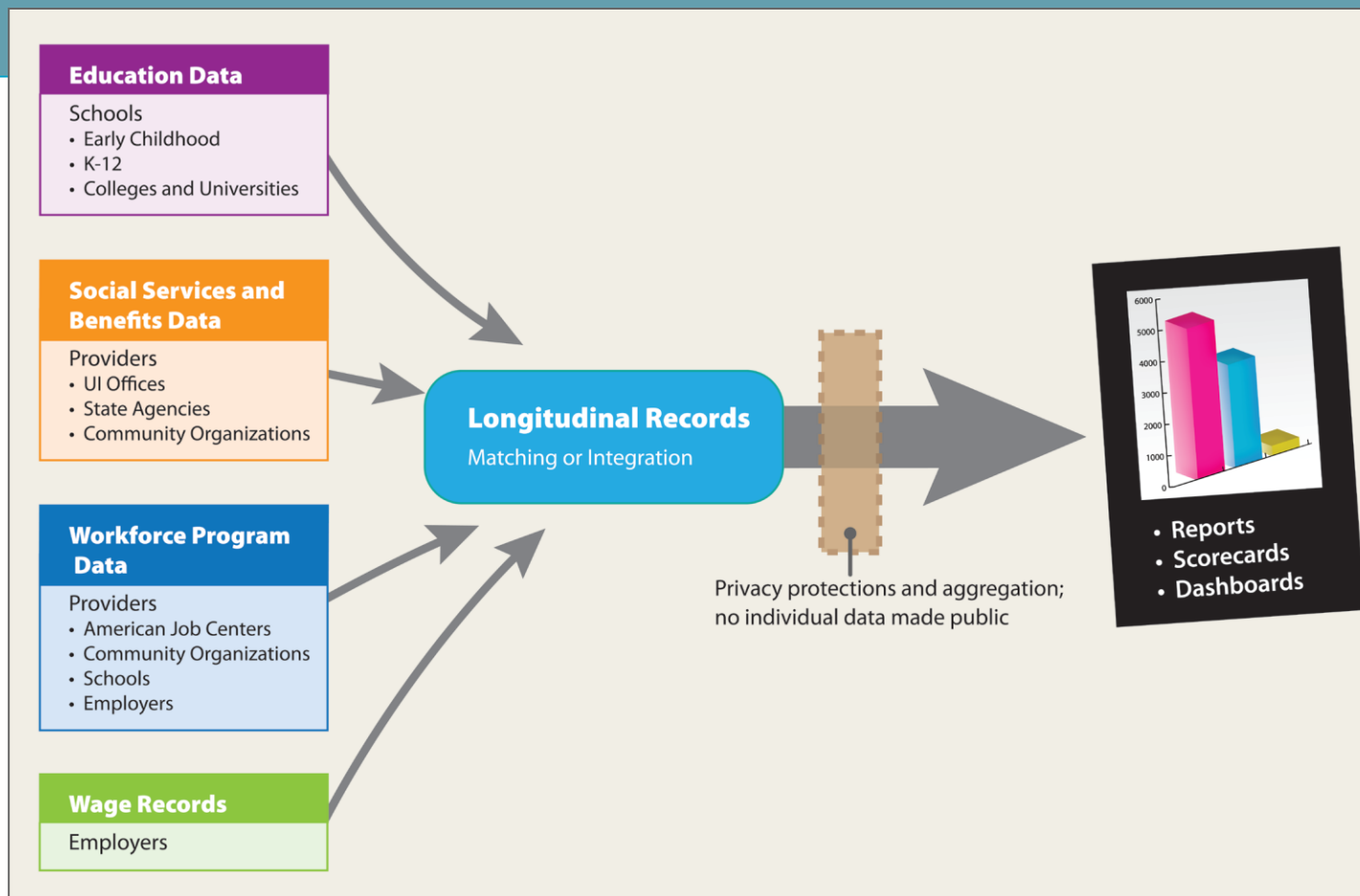
[WorkforceDQC.org](http://WorkforceDQC.org)



# Ain't No Party Like A...



# Power of Longitudinal Data



# Filling the Gaps

### POSTSECONDARY DATA

Records that measure student access, progress, success, and affordability through higher education.



### WORKFORCE PROGRAM DATA

Data on participants (demographics, services received, credentials attained) in programs designed to help workers build skills and find employment.



### EMPLOYMENT DATA

Information about the employee, the employer, and wages.



### CHALLENGES TO FILLING GAPS

#### LEGAL

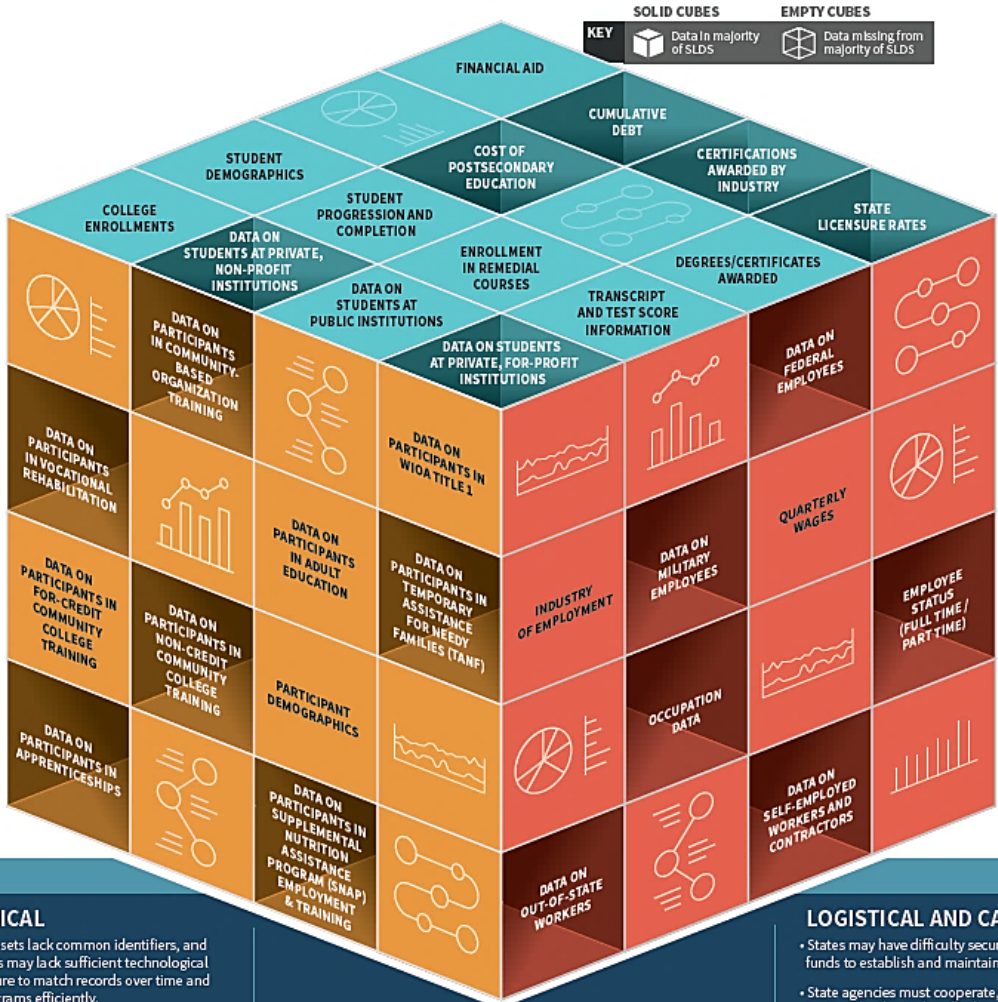
- Multiple state and federal laws and regulations restrict access to and usage of education and employment data.

#### TECHNICAL

- Some data sets lack common identifiers, and some states may lack sufficient technological infrastructure to match records over time and across programs efficiently.

#### LOGISTICAL AND CAPA

- States may have difficulty securing funds to establish and maintain data systems.
- State agencies must cooperate, but trust each other to handle data app



# Use It or Lose It

🎓 Subbaccalaureate certificate less than 1 year in Welding Technology/Welder.  
at  
🏛️ Red Rocks Community College

☆ Add to Favorites

ROI

Looking for more comparison options?

Select A Different Major  OR Select A Different School



**\$415,995**

This is how much more money you will make, on average, than a high school graduate over the next 20 years.


Graduates From  
Red Rocks Community College

Avg. First-Year Wages  
**\$19,728**

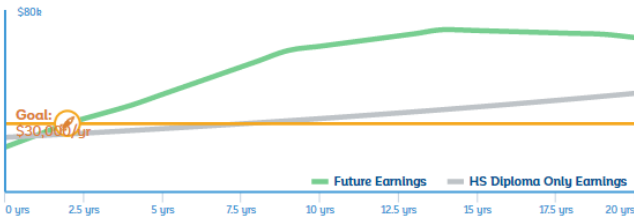
Avg. Cost of Degree  
**\$5,948**

**2 Years to Launch!**


It would take 8 years without this program.



**Already started your career?**



Calculate Your Lifestyle Goal



Personalize This Number

In Colorado, this is what students in this major are saying about their jobs:

**46%**

Are deeply interested in the work they do

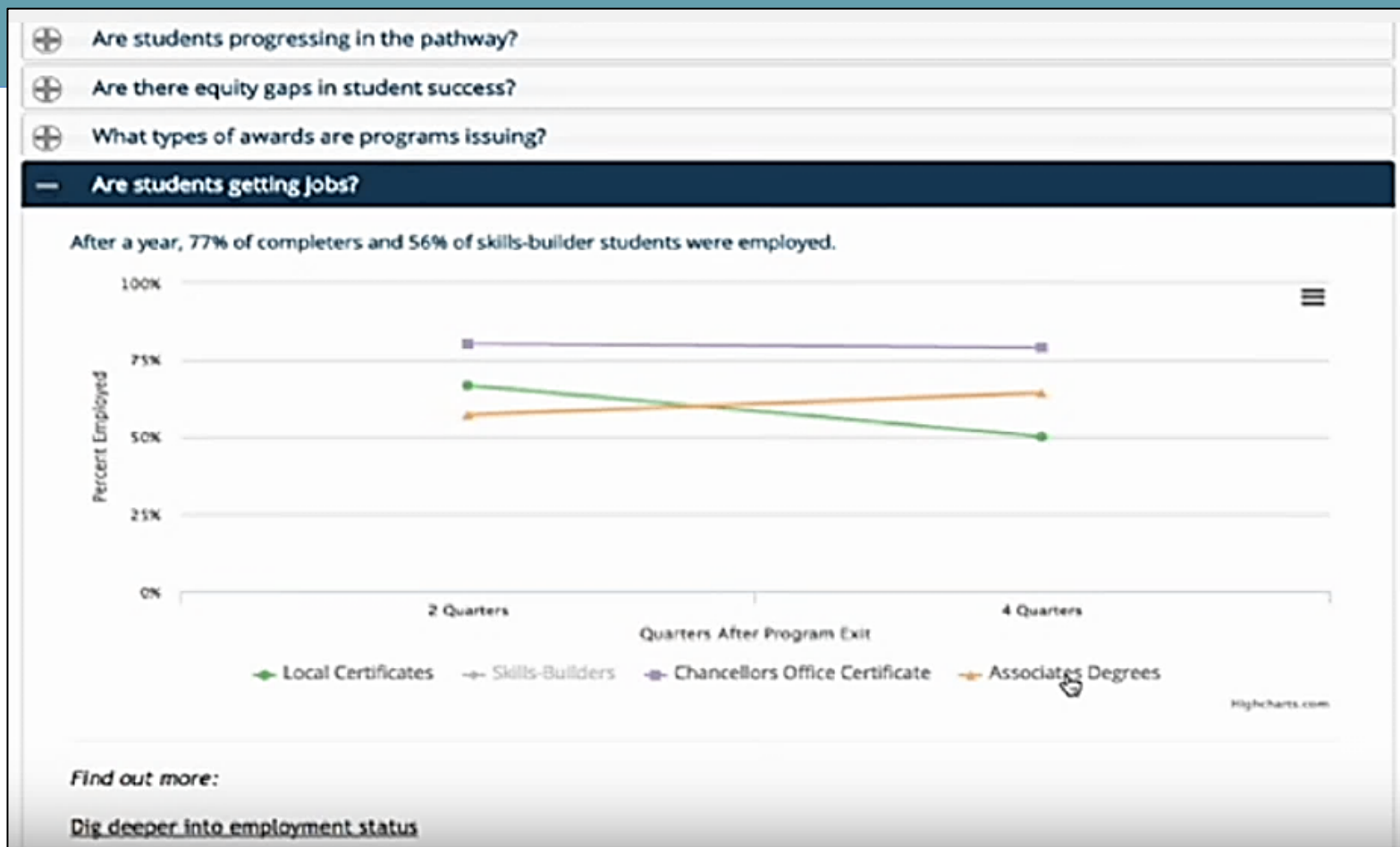
**36%**

Say they have the ideal job for them

**86%**

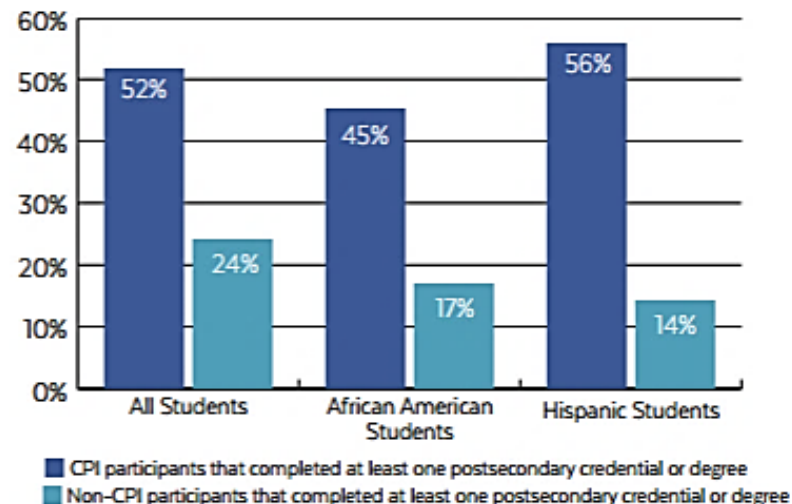
Are satisfied with their personal life today

# Use It or Lose It



# Expanding Capacity

**FIFTY TWO PERCENT** of all CPI participants enrolled between 2006 and 2013 completed at least one postsecondary credential or degree, **COMPARED WITH JUST 24 PERCENT** of non-CPI community college students across the state. For minority students, the numbers were particularly impressive: **African-American CPI participants** were about **THREE TIMES AS LIKELY** as their counterparts in the general community college population to obtain a certificate or degree, while **Hispanic CPI enrollees** earned postsecondary credentials at **FOUR TIMES THE RATE** of non-CPI Hispanic students.



In 2011, CPI participants earned associate degrees at **EIGHT TIMES THE RATE** of the general student population (39 percent compared to 4.6 percent).



# We Can Do Better



**With great power,  
comes great  
responsibility**





**WORKFORCE**  
**DATA QUALITY**  
**CAMPAIGN**

## Contact

Rachel Zinn  
WDQC Director, National Skills Coalition  
[rachelz@workforcedqc.org](mailto:rachelz@workforcedqc.org)  
202-223-8355, ext. 113



[@WorkforceDQC](https://twitter.com/WorkforceDQC)

[WorkforceDQC.org](https://WorkforceDQC.org)

